



Guidelines: 3 Panel Twist 2x 800mm Flat 1x 550mm Flexi Link

Create your artwork in a single file, working at 1/4 size.

Add a visible cutting guide to indicate the top of your artwork.

Add vertical crop marks corresponding to the exact width of each twist panel.

Add horizontal crops to show the base.

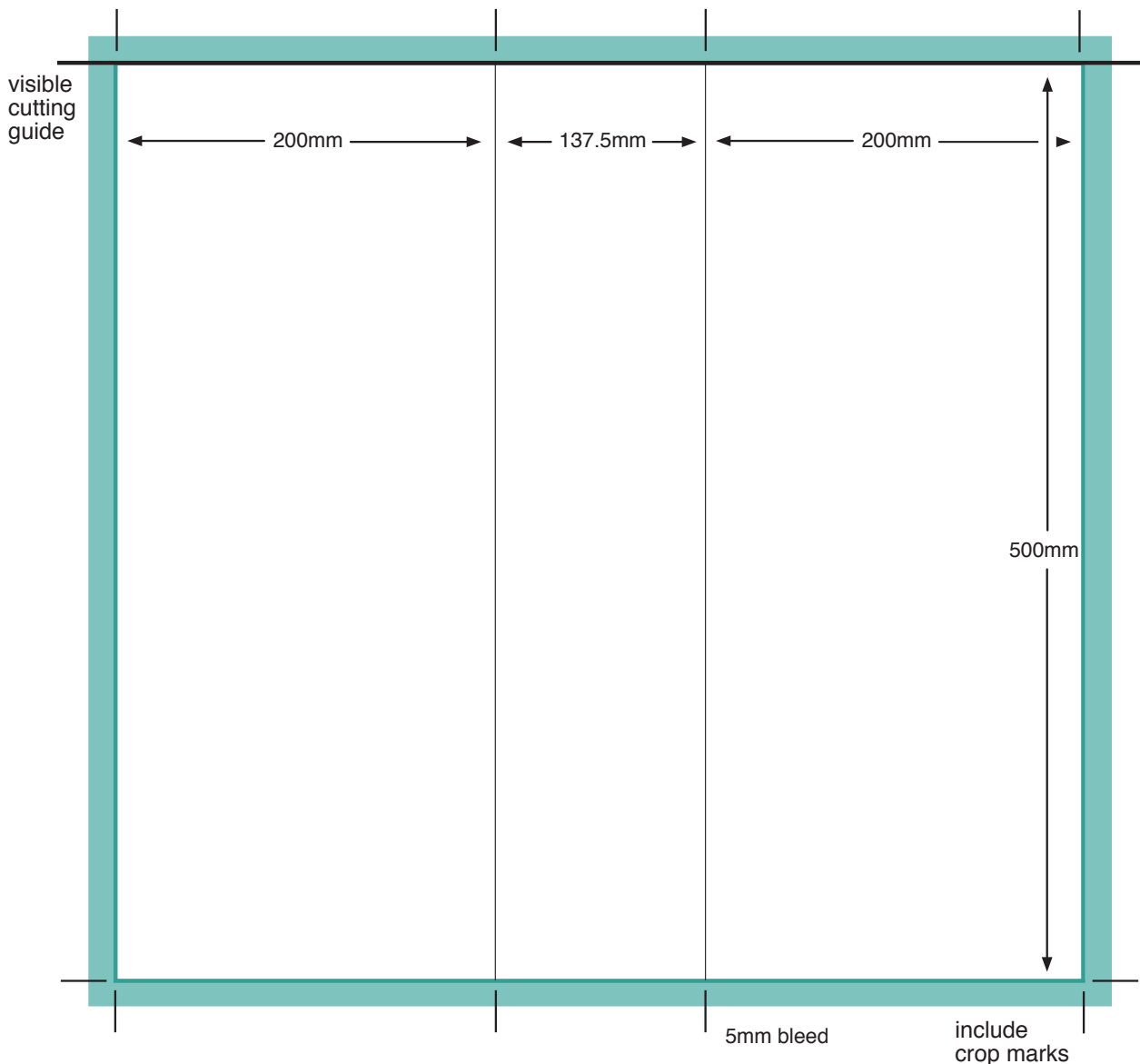
Avoid text breaks over panels i.e individual characters crossing over panels.

Artwork should be in CMYK.

All images should be 300dpi.

Please outline all fonts.

Preferred file types: PDF



Contact:

0151 649 3663

<http://bannersforbusiness.co.uk>