



Guidelines: 5 Panel Popup

These guidelines will show you how to create artwork for a 5 Panel Popup

3x3 Popup Dimensions

Full Size

3365mm x 2225mm

1/4 Size

841mm x 556.25mm

Create your artwork in a single file, working at 1/4 size.

Add a visible cutting guide to indicate the top of your artwork.

Add vertical crop marks corresponding to the exact width of each individual panel.

Add horizontal crops to show the base.

Include 20mm (5mm at 1/4 size) bleed around your artwork.

Avoid text breaks over panels i.e individual characters crossing over panels.

The end two thirds of each end panel will be wrapped around the back of the system, text should not be placed here but extend background colour.

Artwork should be in CMYK.

All images should be 300dpi.

Please outline all fonts.

Preferred file types:

- PDF
- EPS
- TIFF

If you need to send other file formats please contact us for further details.

Contact:

0151 649 3663

<http://bannersforbusiness.co.uk>

Guidelines: 5 Panel Popup

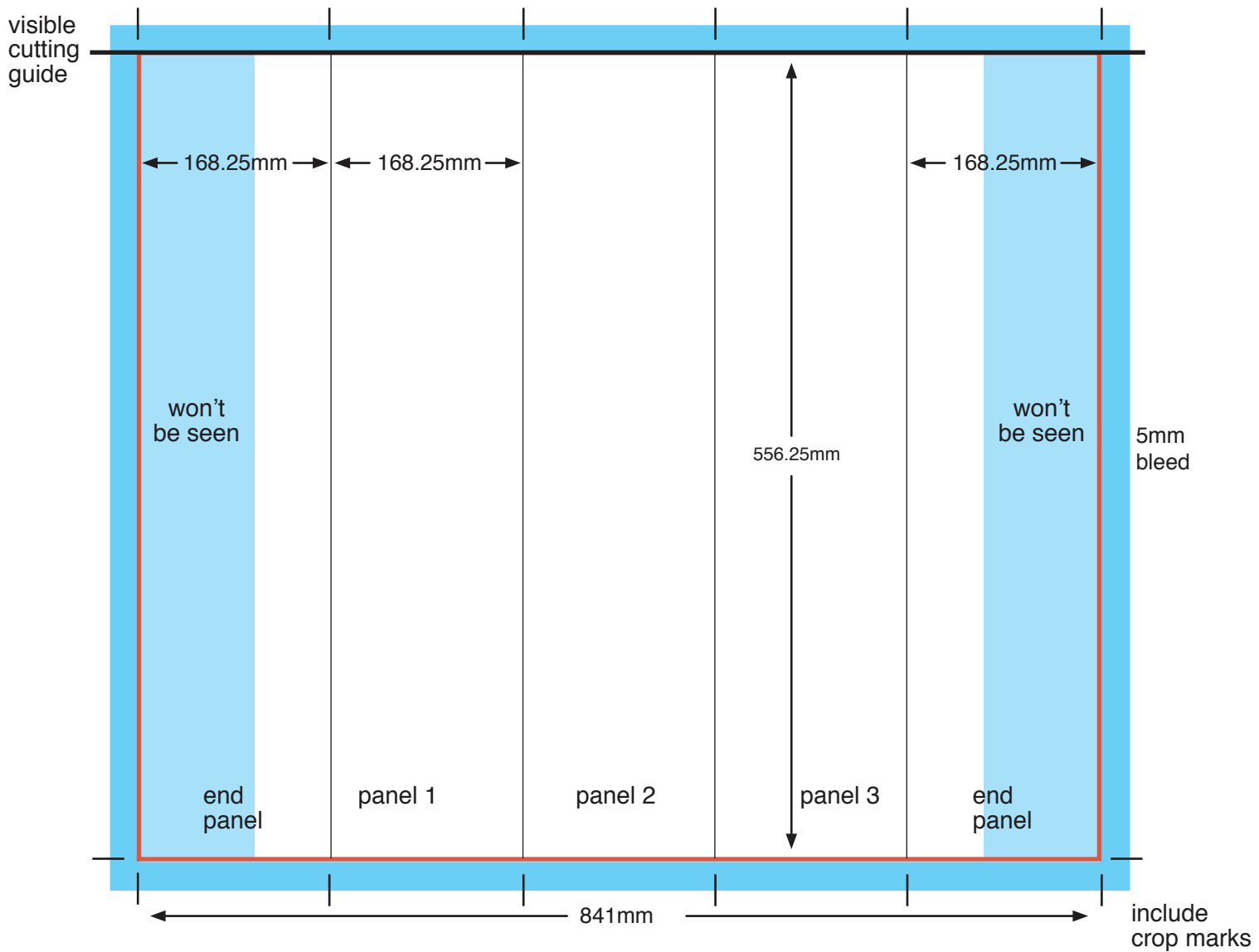
3x3 Popup Dimensions

Full Size

3365mm x 2225mm

1/4 Size

841mm x 556.25mm



Contact:

0151 649 3663

<http://bannersforbusiness.co.uk>